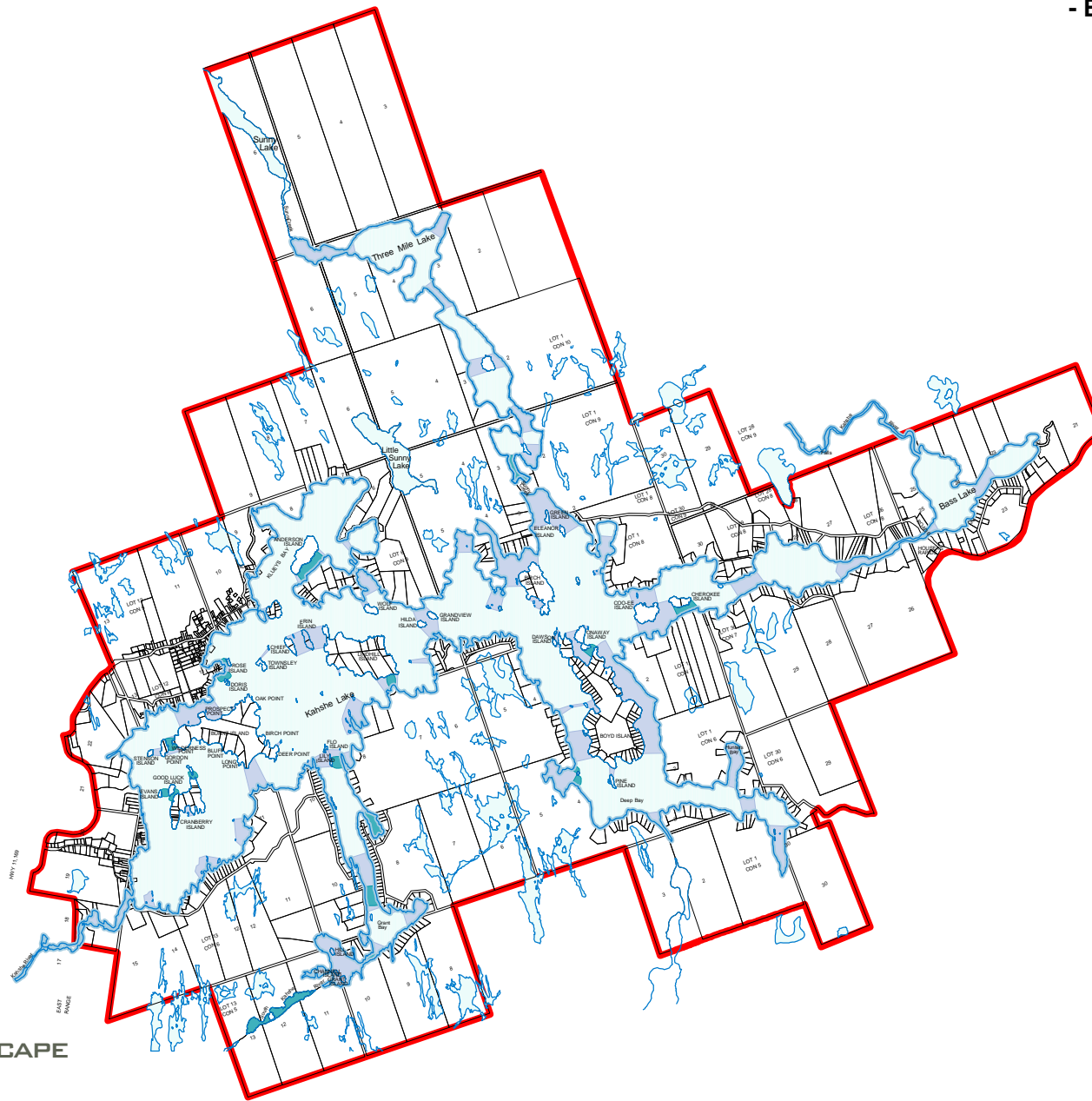






**MAP 16
KAHSHE LAKE PLAN 2001**

**- BOAT CHANNEL PROTECTION AREAS
AND NARROW WATER BODIES -**

Dwg: (JL) 02-May-31 Rev: 03-Mar-13
File#63900

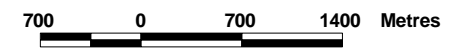


Legend

-  **Narrow Water Bodies**
(as defined in Section B.4.3.7.1 of the Gravenhurst Official Plan)
A narrow waterbody is defined as a navigable lake or river with a minimum distance from shoreline to shoreline of generally less than 150 metres (500 feet)
-  **Boat Channel Protection Areas**
These areas were identified in 1985 as being significant narrow waterbodies where development may be restricted
-  **Lot Fabric**
-  **Study Area Boundary**



SCALE: 1 : 60 000



Source: Town of Gravenhurst
GIS Department (OBM data, property, zoning) 2002
Gravenhurst Official Plan